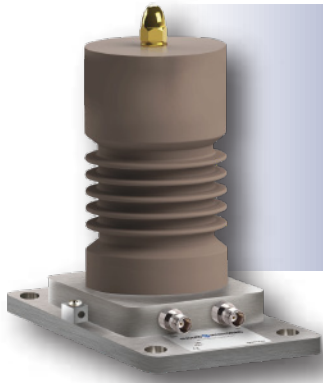




HSENS-CC

Partial Discharge Capacitive Coupler



High Dielectric Capacitive Coupler for Reliable PD Monitoring
Rugged Monitoring's Capacitive Coupler is a highly adaptable partial discharge sensor engineered for precise PD monitoring and testing across various electrical assets, including transformers, generators, motors, and switchgear.

HSENS-CC is a compact capacitive coupler sensor engineered for accurate and efficient Partial Discharge (PD) detection and monitoring. Designed to meet the needs of modern electrical systems, this sensor is suitable for a wide range of applications, including motors, switchgear, and transformers. Built with high dielectric materials, the HSENS-CC is ideal for both temporary and permanent installations, particularly in challenging environments like busbars and terminal boxes with limited space.

Available in multiple capacitance ratings, from 1nF to 9nF, and nominal voltages up to 36kV, the HSENS-CC is adaptable to a wide range of PD monitoring systems. It is also equipped with built-in overvoltage protection and provides flexible output options (BNC/TNC connections) for seamless integration with any HF PD monitoring system, regardless of the manufacturer. With its versatile design, the HSENS-CC can be mounted either vertically or horizontally, depending on space constraints, making it highly adaptable for various industrial settings. The robust construction, compact size, and reliable performance of the HSENS-CC make it a dependable solution for ensuring electrical asset safety and operational efficiency.

» Benefits

- Enhanced Accuracy
- Minimal Operational Disruption
- Safe and Easy Installation
- Versatility in Installations
- Customizable for Various Applications

» Features

- Electrical durability and thermal resilience
- Operation free from noise and corona effects
- Designed for high-temperature, high-voltage applications
- Excellent insulation properties and mechanical strength
- Superior arc resistance properties
- Noise-free from PD

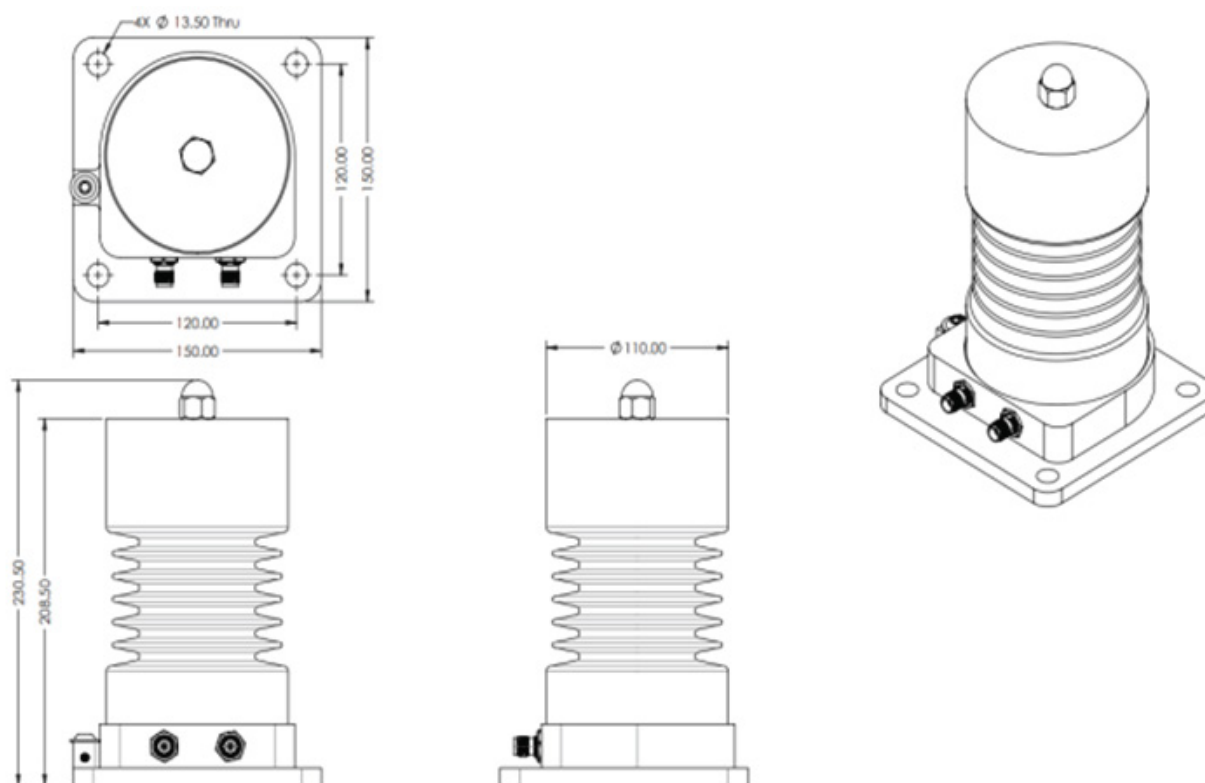
» Applications

- Generator
- Motor
- Switchgear
- Transformer and Dry-type transformer

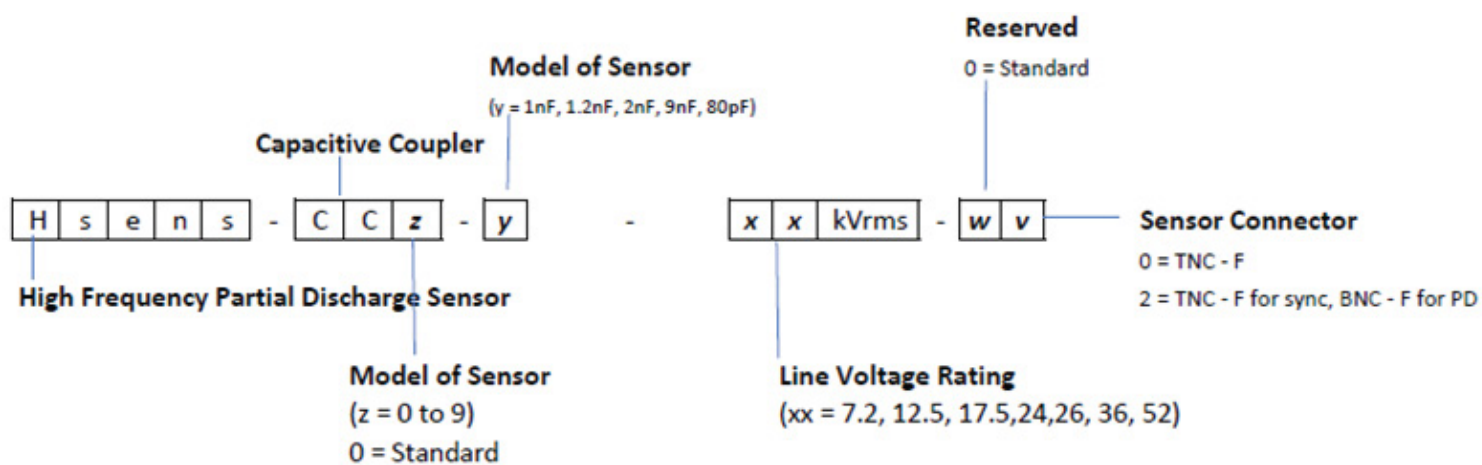
» Technical Specifications

[illegible]

» Product Drawing



» Ordering Code



CERTIFICATIONS



ISO 9001



ISO 14001



OHSAS
18001



Lloyd's
Register



Atex
Certification



NIST
Certification

Canada

1415 Frank-Carrel, Sulte , 230, Quebec, QC-G1N , 4N7, CANADA

Asia Pacific | China | India | Middle East & Africa | Europe | North America | Latin America

+1-418-767-0111

info@ruggedmonitoring.com

www.ruggedmonitoring.com