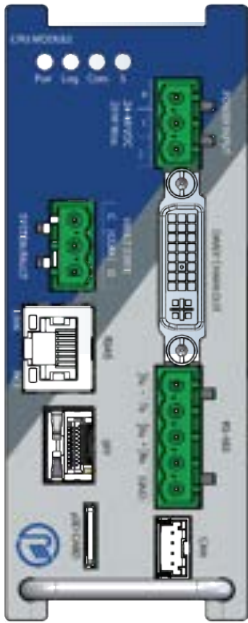


Advanced Central Processing Unit

RELIABLE

CPU201

Precision meets performance with unmatched processing power and intelligence.



RM's CPU201 is a revolutionary addition to our advanced condition monitoring solutions, ensuring optimal performance and reliability of your critical assets the CPU201 takes condition monitoring to new heights. This cutting-edge module is equipped with a range of intelligent features, making it the ideal choice for precision monitoring and data-driven decision-making.

Working Principle:

■ System Fault Relay

The CPU201 comes with a System Fault relay, featuring a Form-A relay with two contacts. This relay is "hard wired" and automatically energizes or activates upon power-up, providing instant notifications of any system faults, ensuring timely actions to safeguard your assets.

■ MicroSD Memory Card Slot

With a built-in microSD memory card slot, the CPU201 allows for seamless instrument temperature logging. By simply inserting an SD card, you can log temperature data effortlessly, ensuring comprehensive monitoring and analysis of asset conditions.

■ Easy Data Retrieval

Retrieving the logged data from the microSD card is effortless. Easily access the SD card content by removing it from the instrument and connecting it to a PC computer using a USB adapter. This user-friendly process ensures convenient data analysis and archiving.

■ Webserver Data Transfer

For added flexibility, the CPU201 facilitates data transfer to a PC using the built-in webserver. While this method is suitable for smaller data files, we recommend using the microSD card for larger files to ensure efficient and faster data retrieval.

With the CPU201 Central Processing Unit, gain unparalleled control and insights into your electrical assets' condition. Stay ahead of potential issues, make informed decisions, and optimize maintenance strategies with this powerful and intuitive module. Invest in the CPU201 and unlock the true potential of your assets for a future of enhanced reliability and performance.

» Features

- Instantaneous processing
- Comprehensive Data Analysis
- Precise Fault Detection and Diagnosis
- Alarm & Notification
- Historical Data Storage
- Seamless Communication & Integration

» Applications



Transformer Monitoring
(Oil Filled / Dry type)



Motors/Generators Monitoring
(DOL / VFD)



Cable Monitoring
(EHV / HV / MV)



Switchgear Monitoring
(GIS / AIS / MV Panel)

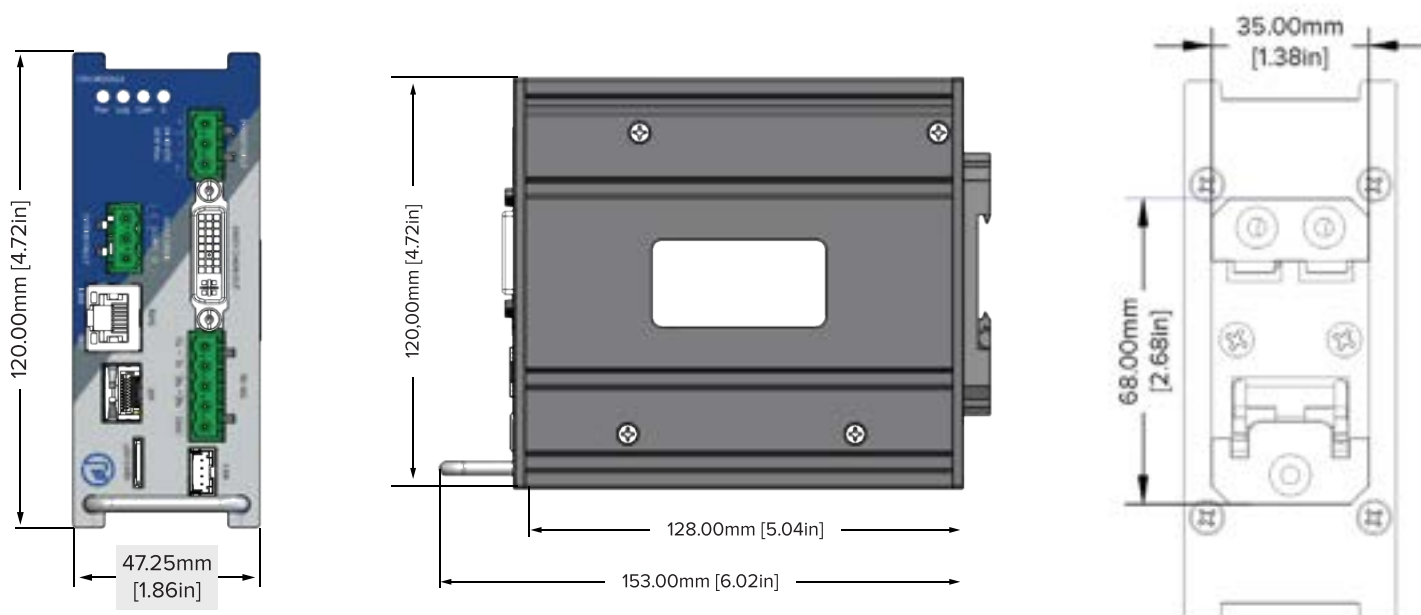
» Benefits

- System boasts powerful gateway and media converter capabilities
- Historical Data Storage and Trend Analysis
- Proactive Maintenance and Cost Savings
- Informed and Quick Decision Making
- Reliability and Longevity of assets
- Prevents unexpected failures and reduces downtime

» Technical Specifications

Data storage capacity	Micro SD external memory lot (up to 2 TB)
Logging Rate	1 Sec interval on USB
Config Port	USB (to use with Rugged Connect Windows software)
Dimensions(mm)	H 120 x W47.25 x D 128
Communication & Integration Options	Can integrate with any third party devices that are compatible with Modbus, DNP3.0, IEC 60870-5-104, MQTT, IEC61850, PRP
Input supply	24VDC
Power consumption	25W

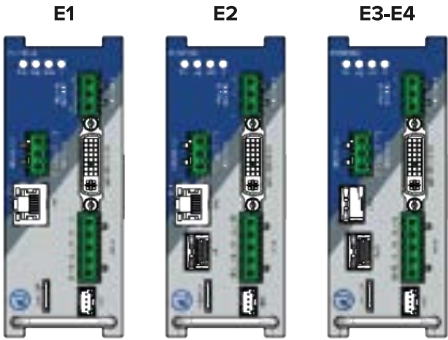
» Product Drawing



» Ordering Code



- Ethernet Option**
 0 = No Ethernet
 1 = RJ45 only
 2 = RJ45 + SFP (100 Mbps / 1 Gbps)
 3 = Dual SFP (100 Mbps) → 1 SFP remain configurable (100 Mbps or 1 Gbps)
 4 = Dual SFP (1 Gbps) → 1 SFP remain configurable (100 Mbps or 1 Gbps)
 *SFP modules to be purchased separately
- MemoryOptions**
 0 = No Memory (Default)
 4 = 4GB
 8 = 8GB



-EX OPTIONS	-E0	- R501 with 01x RS485 port only. - No Ethernet Port available - Supports Modbus RTU, DNP3.0 RTU and IEC60870-101 protocols
	-E1	- R501 with 01x RS485 port - 01x Ethernet Port (RJ-45) - Supports Modbus, DNP3.0, IEC60870-101, IEC60870-104, and IEC61850 protocols
	-E2	- R501 with 01x RS485 port - 01x Ethernet Port (RJ-45) - 01x SFP (100mbps/1gbps) Slot only (No Module included) - Supports Modbus, DNP3.0, IEC60870-101, IEC60870-104, and IEC61850 protocols
	-E3	- R501 with 01x RS485 port - 01x SFP (100mbps) Slot only (No Module included) - 01x SFP (100mbps/1gbps) Slot only (No Module included) - Supports Modbus, DNP3.0, IEC60870-101, IEC60870-104, and IEC61850 protocols
	-E4	- R501 with 01x RS485 port - 01x SFP (1gbps) Slot only (No Module included) - 01x SFP (100mbps/1gbps) Slot only (No Module included) - Supports Modbus, DNP3.0, IEC60870-101, IEC60870-104, and IEC61850 protocols
SFP MODULES	RM-SFP-SX-LC	SFP Module with 1gbps Speed (1000Base-SX), Multimode (covers up to 550m), LC Connector type, Fits into SFP slot of R501
	RM-SFP-FX-LC	SFP Module with 100mbps Speed (1000Base-FX), Multimode (covers up to 2Km), LC Connector type, Fits into SFP slot of R501

CERTIFICATIONS



1415 Frank-Carrel, Sulte , 230, Quebec, QC-G1N , 4N7, CANADA

Asia Pacific | China | India | Middle East & Africa | Europe | North America | Latin America

+1-418-767-0111

info@ruggedmonitoring.com

www.ruggedmonitoring.com